

English

Description

- 1 Brush head
- 2 Brush head identification symbol
- 3 Smart Pressure Sensor / Light Ring
- 4 Interface
- 5 Handle
- 6 Charger
- 7 On/off button
- 8 Mode switch button
- 9 Low charge indicator
- 10 Brush Replacement Reminder

Features & Accessories (depending on model):

- a Smart Pressure Sensor
- b 2-minutes brushing reward illumination
- c Brush head holder with cap
- d Travel case
- e Brush head holder stand
- f Brush head «Ultimate Clean»
- g Brush head «Gentle Care»
- h Brush head «Radiant White»

Note: Content may vary based on model purchased.

Welcome to Oral-B!

Before operating this toothbrush, please read these instructions and save this manual for future reference.

IMPORTANT

- Periodically check the entire product/cord/accessories for damage. A damaged or non-functioning unit should no longer be used. If the product/accessory is damaged, take it to an Oral-B Service Centre. Do not modify or repair the product. This may cause fire, electric shock or injury.
- Never insert any object into any opening of the appliance.
- Usage by children under age 3 is not recommended. Toothbrushes can be used by children and persons with reduced physical, sensory or mental capabilities or lack of experience and knowledge, if they have been given supervision or instruction concerning use of the appliance in a safe way and understand the hazards involved.
- Cleaning and user maintenance shall not be made by children without supervision.
- Children shall not play with the appliance.
- Use this product only for its intended use as described in this manual. Do not use attachments which are not recommended by the manufacturer.
- For tooth brushing only. Do not chew or bite on brush. Do not use as a toy or without adult supervision.
- Only use the charger provided with your appliance.

WARNING

- Do not place the charger in water or liquid or store where it can fall or be pulled into a tub or sink. Do not reach for it when fallen into water. Unplug immediately.
- Avoid sharp bending, jamming or squeezing of the cord.
- This appliance contains batteries that are non-replaceable. The appliance has no user serviceable parts. Do not open and disassemble device except when disposing of the battery. Follow handling and disposal instructions of the battery/device described in this manual.
- When unplugging, always pull the power plug instead of the cord. Do not touch the power plug with wet hands. This can cause an electric shock.
- If you are undergoing treatment for any oral care condition, consult your dental professional prior to use.
- This toothbrush is a personal care device and is not intended for use on multiple patients in a dental practice or institution. For hygienic reasons we recommend the use of individual brush handles and brush heads for each family member.
- Small parts may come off, keep out of reach of children.

To avoid brush head breakage which may generate a small parts choking hazard or damage teeth:

- Prior to each use, ensure the brush head fits well. Discontinue use of the toothbrush, if brush head no longer fits properly. Never use without a brush head.
- If the toothbrush handle is dropped, the brush head should be replaced before the next use even if no damage is visible.
- Replace brush head every 3 months or sooner if brush head becomes worn.
- Clean brush head properly after each use (see «Cleaning Guidelines» paragraph). Proper cleaning ensures the safe use and functional life of the toothbrush.

Important Information

- This toothbrush and pouch (accessory) contains NdFeB magnets and generate magnetic fields. If you use a medical device or have an implanted medical device, consult with the medical device manufacturer or a physician, if you have questions about safely using your Oral-B iO3 toothbrush.

Specifications

For voltage specifications refer to the bottom of the charging unit. Noise level: 64 dB (A)

Using your toothbrush

Charging and Operating

- To charge the battery place the toothbrush on the plugged-in charger (6).
- During charging the on/off button is blinking white. Once it is fully charged the indicator light turns off. A full charge typically takes 16 hours.

- If the battery is running low the low charge indicator (9) blinks in red. Once the battery is empty, the motor stops. To charge the battery please put the brush on the charger.
- The toothbrush can be stored on the plugged-in charger to maintain it at full charge; a battery overcharge is prevented by the device. However, for environmental purposes we recommend to keep charger in the power socket during charging only.
- The toothbrush switches off when exceeding the outside operating limits and/or standard battery current. To enable operation the toothbrush needs to be put on the charger.

Caution: This toothbrush contains a Li-Ion battery. Do not expose toothbrush to temperatures higher than 50 °C / 122 °F.

Note: Store the toothbrush at room temperature for optimal battery maintenance.

Start Brushing

Place the brush head (1) on the handle (5). A small gap should remain between handle and brush head.

Wet brush head and apply toothpaste. To avoid splashing, put the brush head into your mouth before switching the toothbrush on by pressing the on/off button (7).

Guide the brush head from tooth to tooth. Brush the outsides, the insides and the chewing surfaces. Brush all four quadrants of your mouth equally. You may also consult your dentist or dental hygienist about the right technique for you.

In the first days of using any electric toothbrush, your gums may bleed slightly. In general, bleeding should stop after a few days. Should it persist after 2 weeks, please consult your dentist or dental hygienist. If you have sensitive teeth and/or gums, Oral-B recommends using the «Sensitive» or «Super Sensitive» modes (optional in combination with an Oral-B «Gentle Care» brush head (g)). Availability of modes may vary depending on model purchased.

Timer

The timer signals with a short stuttering sound in 30-seconds intervals to move to the next quadrant of your mouth. A long stuttering sound indicates the end of the professionally recommended 2-minute brushing time.

The timer memorizes the elapsed brushing time, even when the toothbrush is briefly switched off during brushing. The timer resets if pausing longer than 30 seconds or placing the toothbrush on the plugged-in charger.

Brushing reward illumination

The completion of a 2-minutes brushing event will be rewarded with a colorful light ring illumination. (b)

Smart Pressure Sensor / Light Ring (a)

Your toothbrush is equipped with a Smart Pressure Sensor (3) that has various functionalities indicated via different colours of light (a):

- White = Low pressure indicator / default setting.
- Green = optimal pressure indicator
- Red = high pressure indicator

Brushing with the recommended pressure is indicated via a green light. If too much pressure is applied, a red light reminds you to reduce pressure. If the Smart Pressure Sensor illuminates in white, we recommend applying more pressure.

When high pressure is applied the brush head movement will be reduced (in «Daily Clean», «Intense» and «Sensitive» modes). Periodically check the operation of the Smart Pressure Sensor by pressing moderately on the brush head during use.

Brushing modes (depending on model)

Your toothbrush offers different brushing modes:

- **«Daily Clean»** – Standard mode for daily cleaning
- **«Intense»** – For an extraordinary clean feeling (operated with a higher speed)
- **«Sensitive»** – Gentle, yet thorough cleaning for sensitive areas
- **«Super Sensitive»** – Super gentle cleaning for extra sensitive areas
- **«Whiten»** – Polishing for occasional or everyday use
- **«Tongue Clean»** – Tongue cleaning for occasional or everyday use
- **«Gum Care»** – Gentle massage of gums

Note: The sequence and availability of brushing modes may vary depending on model purchased.

When operating the «Tongue Clean» mode, we recommend using a «Gentle Care» brush head (g). You can brush your tongue either with or without toothpaste. Brush the whole area of your tongue systematically in gentle movements. The recommended brushing time is 30 seconds; the motor stops after 30 seconds.

Mode setting:

For first use the toothbrush starts with the first mode illustrated on the package of your purchased model. To switch to other modes, successively press the mode button (8). You may change the modes during the brushing event. The toothbrush automatically starts in the mode selected last.

Brush heads

Oral-B offers you a variety of different Oral-B iO3 brush heads (f/g/h) that only fit your Oral-B iO3 toothbrush handle and these unique brush heads are dentist-inspired to leave your mouth feeling clean and refreshed.

When to exchange brush head

Some iO3 Oral-B brush heads feature INDICATOR® bristles to help you monitor brush head replacement need. With thorough brushing, twice a day for two minutes, the bristle colour will fade halfway approximately within 3 months, indicating the need to exchange your brush head. If the bristles splay before the colour recedes, you may exert too much pressure on teeth and gums. In general, we recommend replacing the brush head every 3 months.

Brush Replacement Reminder

The toothbrush is equipped with a «Brush Replacement Reminder» indicating the need to exchange the brush head approximately after 3 months when used twice per day. A yellow* light - accompanied by a vibration signal - will illuminate in the mode button (10).

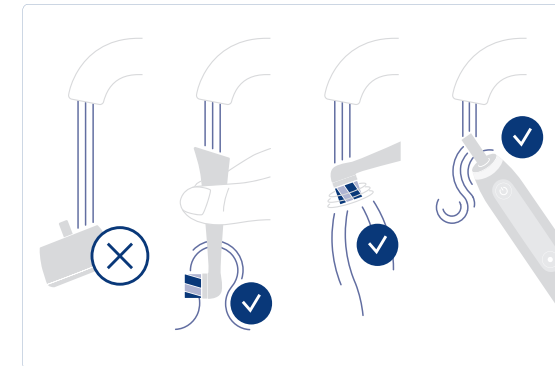
To reset the «Brush Replacement Reminder» hold the mode button pressed for 2 seconds. A vibration and illumination signal confirms the reset. If no action is taken, an automatic reset will happen after several days.

* may appear orange

Cleaning Guidelines

After each brushing, rinse your brush head under running water with the handle switched on. Remove the brush head and clean the handle and brush head separately. Make sure water runs inside the top of the handle while the handle is switched on, as well as inside the brush head. Wipe all parts dry and let them air-dry before reassembling your toothbrush again.

Unplug the charger before cleaning. Clean the charger regularly with a damp cloth. Please check individual cleaning instructions for each accessory in its «Accessories» paragraph.



Accessories (depending on model)

Travel Case (d)

Store the clean and dry toothbrush/brush heads in the travel case (d). The outer and inner case should be cleaned with a damp cloth only.

Note: Clean stains on travel case surface immediately. Store travel case in a clean and dry place.

Brush head holder stand (e) / Brush head holder with cap (c)

You may store your cleaned brush heads on the pins of the brush head holders. Make sure brush heads are dried before placing them in the holder and/or closing the cap. Brush head holders and cap are dishwasher-safe.

Zipper Case / Magnetic Pouch

Store the clean and dry toothbrush/brush heads in the Zipper Case / Magnetic pouch.

The outer and inner parts can be cleaned under running water.

Store the clean and dry toothbrush along with the brush head holder (c) in the magnetic pouch. Make sure brush heads are dried before placing them into the holder and/or closing the cap. The outer and inner surfaces can be cleaned under running water. Store pouches in a clean and dry place.

Note: Clean stains on pouch surfaces immediately.

Subject to change without notice.

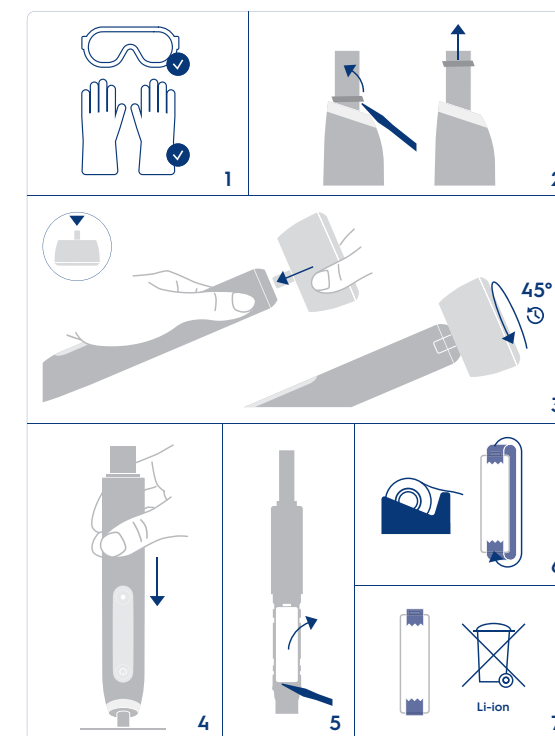
Environmental Notice

Product contains batteries and/or recyclable electric waste. For environment protection do not dispose in household waste, but for recycling take to electric waste collection points provided in your country.



Battery removal at the end of the product's useful life

Do not disassemble the product except when disposing of the battery. Run down battery before removing. When taking out the battery for disposal, use protective clothing (gloves, safety glasses, etc.) to omit skin contact whilst leaking batteries. Use caution not to short the positive (+) and negative (-) terminals. Insulate terminals (e.g. with tape) and put the battery in a plastic bag for disposal.



Open the handle as shown, remove the battery and dispose of it according to local environmental regulations.

Caution! Opening the handle will destroy the appliance and invalidate the warranty.

Guarantee

We grant 1 year guarantee on the product commencing on the date of purchase.

Within the guarantee period we will eliminate, free of charge, any defects in the appliance resulting from faults in materials or workmanship, either by repairing or replacing the complete appliance as we may choose. Depending on availability replacement of a unit might result in a different colour or an equivalent model.

This guarantee extends to every country where this appliance is supplied by Braun/ Oral-B or its appointed distributor. This guarantee does not cover: damage due to improper use, normal wear or use, especially regarding the brush heads, as well as defects that have a negligible effect on the value or operation of the appliance.

The guarantee becomes void if repairs are undertaken by unauthorized persons and if original Braun/Oral-B parts are not used.

To obtain service within the guarantee period, hand in or send the complete appliance with your sales receipt to an authorized Oral-B/ Braun Customer Service Centre.

Warranty replacement brush heads

Oral-B warranty will be voided if electric rechargeable toothbrush damage is found to be attributed to the use of non-Oral-B replacement brush heads.

Oral-B does not recommend the use of non-Oral-B replacement brush heads.

- Oral-B has no control over the quality of non-Oral-B replacement brush heads. Therefore, we cannot ensure the cleaning performance of non-Oral-B replacement brush heads, as communicated with the electric rechargeable toothbrush at time of initial purchase.
- Oral-B cannot ensure a good fit of non-Oral-B replacement brush heads.
- Oral-B cannot predict the long-term effect of non-Oral-B replacement brush heads on handle wear.

All Oral-B replacement brush heads carry the Oral-B logo and meet Oral-B's high quality standards. Oral-B does not sell replacement brush heads or handle parts under any other brand name.

無料修理規定

1. 取扱説明書、本体添付ラベル等の注意事項に従った使用状態で、保証期間内に故障した場合には、無料で修理させていただきます。
2. 保証期間中に無料修理をお願いになる場合には、製品と保証書をご持参、ご提示のうえ、お買い上げ販売店またはプラウニングセンターにお申し付けください。
3. ご郵送の場合は、事前にお近くの販売店、またはプラウニングセンターにご相談ください。
4. ご郵送などで、保証書に記入してあるお買い上げ販売店に修理をご依頼できない場合には、プラウニングセンターにご相談ください。
5. 保証期間内でも次の場合は有料修理となります。
 - 使用上の誤り及び不当な修理や改造による故障ならびに損傷。
 - お買い上げ後の移動、落着、落下等による故障ならびに損傷。
 - 火災、地震、水害、落雷、その他の天災地変、異常電圧、指定外の使用電源（電圧や周波数）等による故障ならびに損傷。
 - 一般家庭以外（業務用等での長期間利用等）で使用された場合の故障ならびに損傷。
 - 保証書の提示がない場合。
 - 保証書にお買い上げの年月日、お客様名、販売店名の記入または販売店から発行される同等の証明書の無い場合、あるいは字句を書き換えられた場合。
 - 消耗品の磨耗や損傷。
 - 当社が認可していない店舗等で修理を行った場合。
 - 当社正規品以外の付属品を使用した場合。
6. 保証書は再発行いたしませんので紛失しないよう大切に保管してください。

修理メモ

この保証書は、本書に明示した期間、条件のもとにおいて無料修理をお約束するものです。従ってこの保証書によって、保証を発行している者（保証責任者）、およびそれ以外の事業者に対するお客様の法律上の権利を制限するものではありません。保証期間経過後の修理については不明の場合は、お買い上げの販売店またはプラウニングセンターにお問い合わせください。

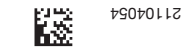
この保証書は、本書に明示した期間、条件のもとにおいて無料修理をお約束するものです。従ってこの保証書によって、保証を発行している者（保証責任者）、およびそれ以外の事業者に対するお客様の法律上の権利を制限するものではありません。保証期間経過後の修理については不明の場合は、お買い上げの販売店またはプラウニングセンターにお問い合わせください。

オーラルB iO3 シリーズ 保証書 持込修理

本書は、本書記載内容（裏面記載）で無料修理を行うことをお約束するものです。お買い上げの日から下記期間中に故障が発生した場合は本書をご提示のうえ、お買い上げの販売店に修理をご依頼ください。お客様にご記入いただいた保証書は、保証期間中のサービス活動及びその後の安全点検活動のために記載内容を利用してさせていただきます。

品名	電動歯ブラシ
型番	IOG3.1C6.0 IB_H / IOG3.1D6.0 IG_H IOG3.1C6.0 WT_H / IOG3.1C6.0 BK_H
対象部分	本体、充電器
保証内容	期間（お買い上げ日より） 1年
お買い上げ日	年 月 日
お客様ご芳名	
ご住所	
販売店・住所	

（販売店名及びお買い上げ日の記入なきものは無効です）
P&Gジャパン合同会社
〒651-0088 神戸市中央区小野柄通7-1-18



19501011Z



取扱説明書 保証書付

ご使用前に必ずお読みの上、正しくご使用ください。巻末に保証書が添付されておりますので、大切に保管してください。

Japan 2
English 8

Internet:
www.oralb.com
www.service.oralb.com
www.oralb.braun.co.jp

Braun GmbH
Frankfurter Str. 145
61476 Kronberg/Germany

Charger Type 3757
Handle Type 3769

EN/JP
21104054/IV-24